

The last piece of Puzzle

A Story About Finding Connection



Dear Parent/guardian

On the following pages, you will find a suggestion for a learning opportunity connected with the story *The Last Piece of Puzzle*.

Reading with your children is a great way to introduce a topic of discussion. But It can be hard to know how to further the learning that happens once the story is over. This is why I have created these materials for you, to take the pressure out of designing your own lessons. The following pages cover, English Language, Comprehension, Social and Emotional Learning as well as Arts and Crafts plus an opportunity for Nature Studies.

How far you choose to take the learning and what you choose to learn from it is entirely up to you and your child or children. Please use this as a guide to aid your homeschooling journey.

To make it as straightforward as possible I have labelled the sections and highlighted the intended outcomes from this resource. It has been designed so that it can be applied to a group of learners or just a single child and their parent/s.

Unlike a traditional lesson plan, this can be tailored to your needs. You may want to just read the story by itself, or you may want to pick out one or two areas to focus on like vocabulary and comprehension. Alternatively, you may wish to use only the activities suggested as the starting point to create your own lesson that is tailored to your child's needs.

The wonderful thing about homeschooling is the flexibility. You choose how and when you want to proceed and allow your child or the children you are educating to guide the lesson.

My hope is that you can revisit this story and the materials provided here, again and again, each time with different learning outcomes.

Above all have fun, be inspired and enjoy your homeschooling journey.

kindest Regards,
 Samantha Williams



The last piece of Puzzle

A Story About Finding Connection

Suggested Topic of Discussion

Connection and what it means to feel connected.

Intended outcomes from this resource:

- We can identify why Russell was unhappy in the story.
- We can define what connection means.
- We can identify the people or groups, we feel connected to.
- We understand that it is important to talk about how we are feeling.
- We can spend time with nature when we feel disconnected.

Key Vocabulary

Connection, Disconnect, Nature, Flamboyant, Sadness, Lonely.

Resources

Story: 'The Last Piece of Puzzle'

Puzzle Pieces Worksheet

Image example pages

Russell Characters

Lollipop sticks

Colouring materials

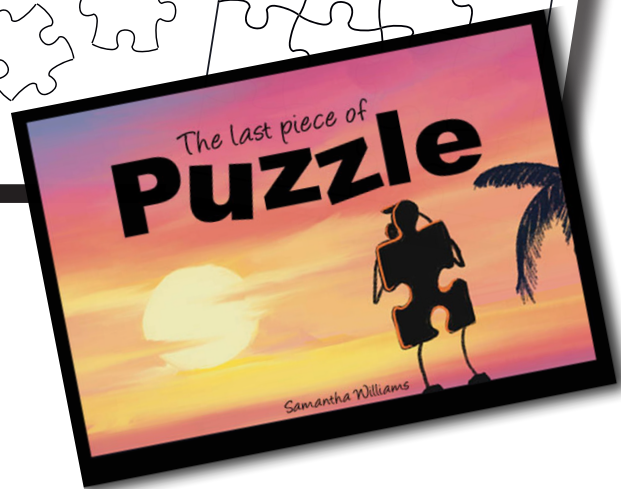
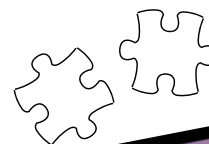
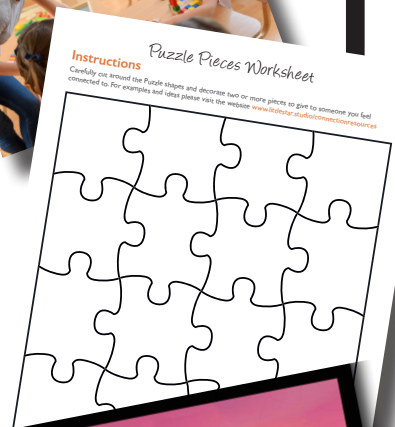
Scissors

Glue or tape

Notes:

For more information, help and guidance for using this resource please visit the website:

www.littlestar.studio/connectionresources



The last piece of Puzzle

A Story About Finding Connection



Comprehension

Read the story and discuss the following questions.

- Why did Russell Quit his Puzzle game?
- What did he do to try and fit in?
- Why did Russell keep searching?
- When Russell laid down at the end, how do you think he felt?

Lay out the image examples. These images can be used as a starting point for your own choice of images for your child or children.

Activity - Identifying Our Connections

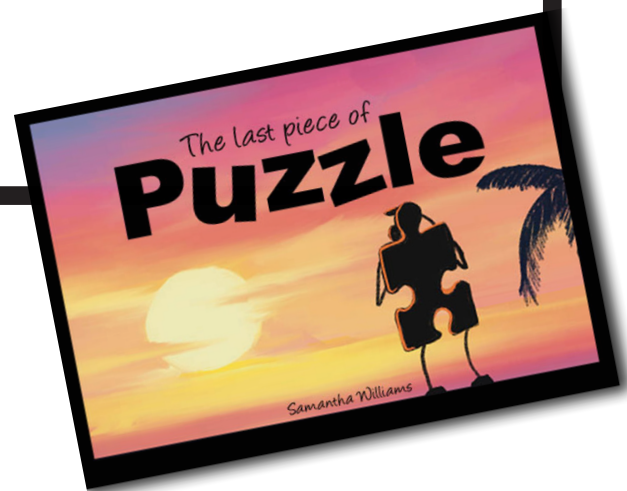
This is a great afternoon creative activity, to show your child /children how they are connected. We can use the larger puzzle pieces for this. Begin by talking about the people in your life with whom you and your children are connected, this may be family, learning groups or clubs. Then using the larger puzzle pieces draw and decorate each piece to represent a single person or animal within that group, don't forget to include yourselves in this. When complete, assemble the whole puzzle together to show who you are your child/children are connected to. You can repeat this activity for family, sports clubs, learning groups or even a place in nature you all feel connected to.

Reflection

Once the puzzle is assembled, sit and talk with your child or children about what they just did. Discuss how you are connected to each other, learning groups or nature. This is a great time to revisit the book again and discuss the meaning of connection and why it is important to feel connected and to know whom they can talk to or what to do anytime they may feel disconnected from themselves or friends.

RUSSELL'S TOP TIP

Cut out and pre-assemble the large puzzle before decorating!



The last piece of Puzzle

A Story About Finding Connection

Activity - Finding New Connections

This is a lovely ice breaker activity if you have a group of children meeting for the first time. If not, it is something you can do with your child or children alone, or when they start a new group or club. It can even be kept as a friend making activity.

Carefully cut out the smaller pieces of the puzzle and stick them onto card. Ask the child or children to decorate two or more joining pieces however they like and give one piece to someone they feel connected to. Make sure to explain the meaning of the activity and let them know it is their choice who and when to give the other piece.

Once the activity is complete, take some time to talk with your child or children about what connection means to you, the people in your life that you feel connected to and the places you feel a connection with. Ask how they are feeling and to whom and where they feel most connected.

Activity - Connecting with Nature

Craft activities are always a great way to connect with your child or children, and this one helps you to connect with nature too.

By making a lollipop character from the story you can use them as prompts on your next walk to your favourite nature spot, around the park or even at home in a favourite house plant. The idea with this, is to let your child choose the plant, tree or space in nature they can place the character.

Talk about where they would like to place the character and about their choices. What makes that plant or tree special to them? Support whatever the answer is.

You can take this activity further by photographing the space and learnig about the plant, tree or area.

Please remove the characters once completed and recycle them or bring them home and use them to make the story more interactive.



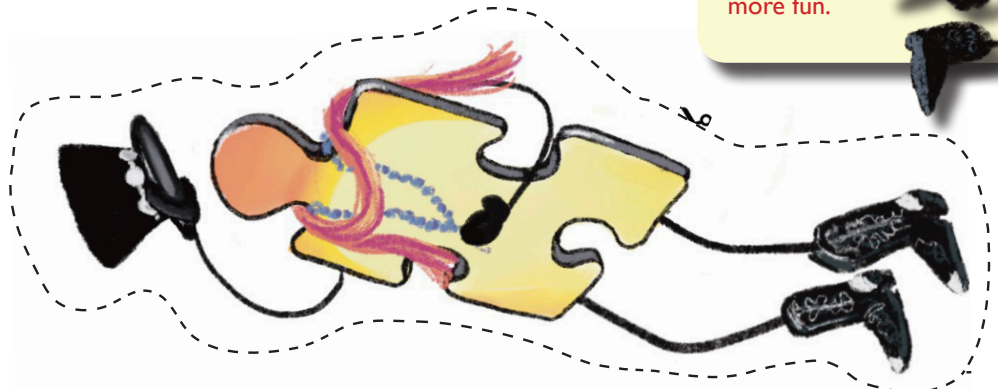
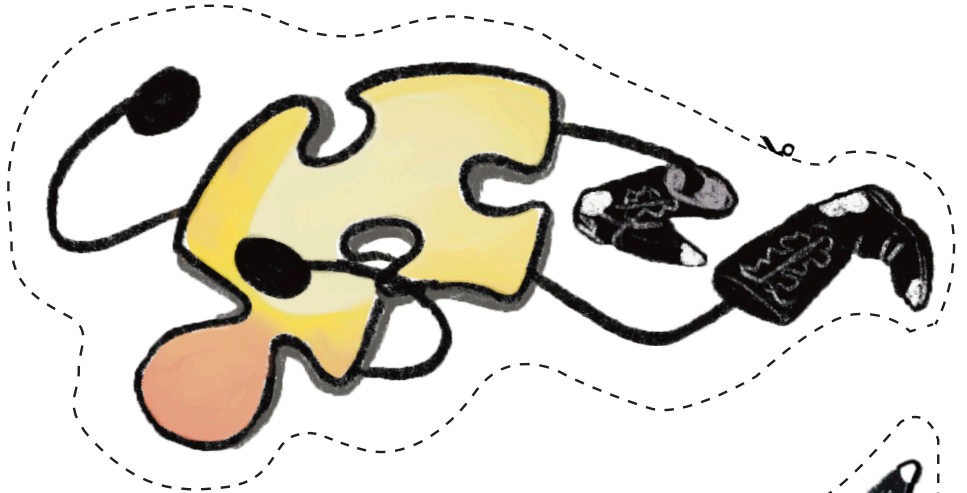
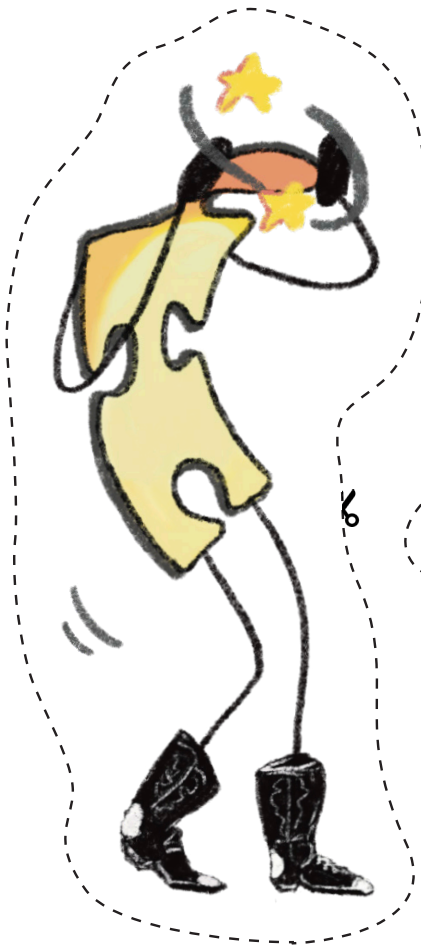
Russell Characters

You Will Need

Printer
Scissors
Card
Lollipop sticks
Tape or glue

Instructions

Cut around the dotted line, stick onto a thick card.
Then attach a lollipop stick to the back using glue or tape.



RUSSELL'S TOP TIP

You can also use these characters with the book to make storytelling more fun.

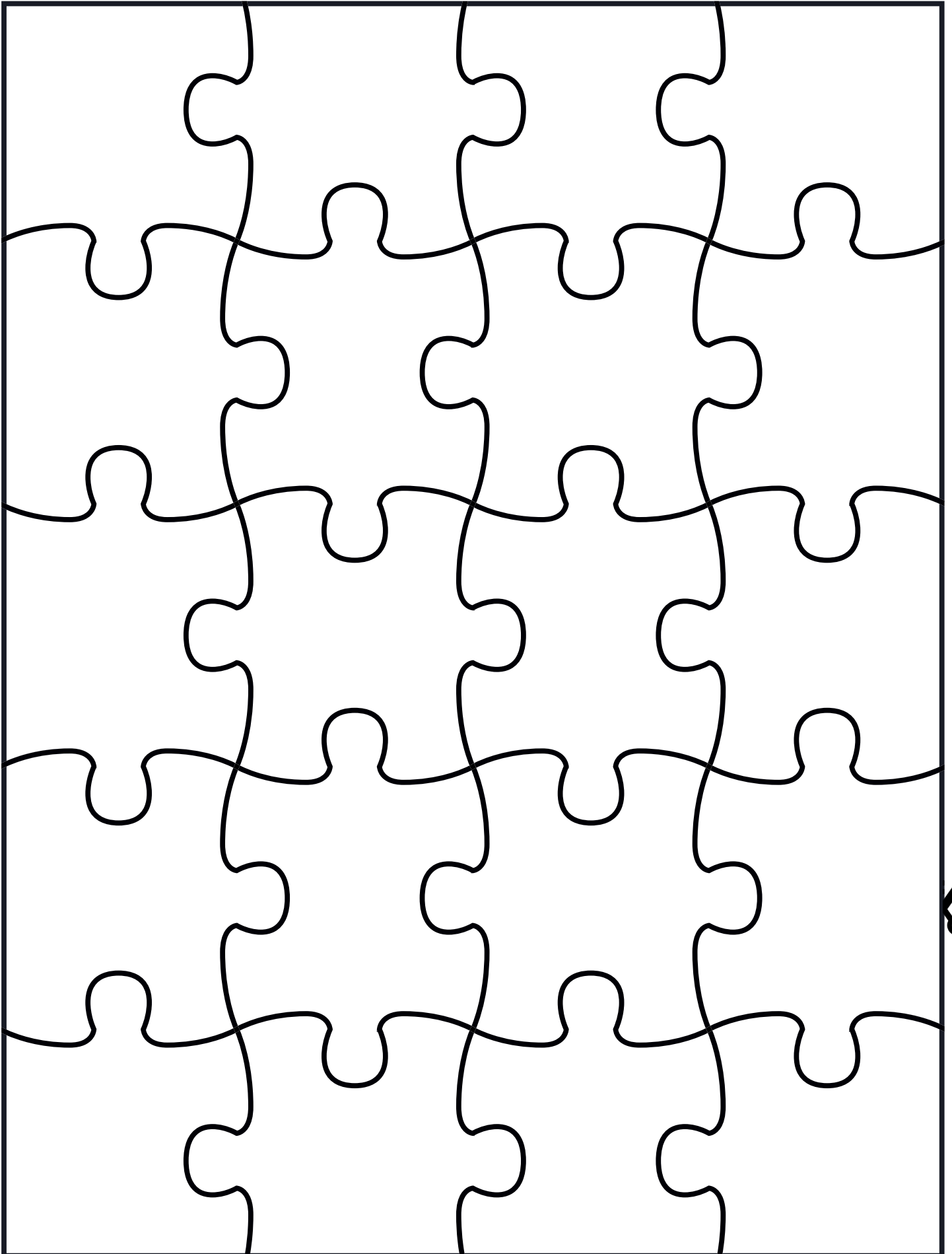


Please Recycle.

Puzzle Pieces Worksheet

Instructions

Carefully cut around the Puzzle shapes and decorate two or more pieces to give to someone you feel connected to. For examples and ideas please visit the website www.littlestar.studio/connectionresources





Are you part of a learning club?



Are you part dance or fitness group?



The last piece of
Puzzle
A Story About Finding Connection

Image Examples



Are you part of a small or big family?



Are you part of a sports team?



The last piece of
Puzzle
A Story About Finding Connection

Image Examples



Are you part of a religious group or fan club?



Are you part of an online learning or gaming group?

